

# Laceyby Village Council News Summer 2024

Welcome to the Summer edition of the Laceyby  
Village Newsletter!



Why not share your interest, hobby, memory, or  
information with the whole village!

Please contact the Clerk for more information, or check  
out the Village Council Website

[www.laceyby-village-council.net](http://www.laceyby-village-council.net)

[clerk@laceby-village-council.net](mailto:clerk@laceby-village-council.net)

With thanks to everyone who contributed photos, time, and information to  
produce this newsletter.

*The views expressed in this newsletter are not those of Laceyby Village Council  
or the Editor, and no liability can be accepted for any error or omissions.*

**THE LACEBY  
SUMMER SOCIAL**  
BUTT LANE PLAYING FIELDS  
**20TH JULY 2024**  
**1-9PM**

**DANGEROUS BROTHERS**  
**Decoy**  
**REVIVALRY**  
**JADE**

Scan to pay

**USE THE QR CODE TO  
PURCHASE  
MUSIC, FOOD & MORE**

**£5 ADULTS  
UNDER 16'S ARE FREE**

PLEASE RETAIN RECEIPT AS PROOF OF PURCHASE WILL BE REQUIRED FOR ENTRY.  
T&C'S APPLY BELOW

All tickets sold are subject to availability and to these terms and conditions. Limited tickets available. No refunds are available after point of purchase. By paying the entry fee you agree to these terms and conditions. Fee includes entry only. Limited parking is available for blue badge holders, please contact us to arrange. Entertainment and food vendors are subject to change, we reserve the right to make alterations to the event where necessary. Admittance is at the discretion of the organisers and the organisers have the right to remove individuals if necessary. The LCC are not responsible for any loss or damage to personal items. The event will continue even in the event of rain, if the event had to be cancelled due to a threat to life, refunds will be available by contacting us. Age checks will be carried out by bar staff when purchasing alcohol.

[@TheLaceybyCC](https://www.facebook.com/thelacebycc)  
[@thelacebycommunitycollective](https://www.instagram.com/thelacebycommunitycollective)  
[thelacebycommunitycollective.org.uk](http://thelacebycommunitycollective.org.uk)  
[info@thelacebycommunitycollective.org.uk](mailto:info@thelacebycommunitycollective.org.uk)

*The views expressed in this newsletter are not those of Laceyby Village Council  
or the Editor, and no liability can be accepted for any error or omissions.*

## Laceby Village Council



Laceby Village Council work in partnership with Laceby community groups, including the Laceby Community Collective, The Stanford Centre, and Laceby in Bloom.

Recently, Laceby Village Council have purchased and installed some new benches across the village.

We have a Queen's Jubilee Bench on Grimsby Road, and 2 Kings Coronation Benches located at The Mulberries and The Cemetery.

Following a recent email from a resident about a broken bench on Charles Avenue, the Village Council was able to remove the broken bench and install a fabulous new bench. Thanks to Derek and Dave for your hard work installing the new bench, and we hope you all enjoy it!

Other benches installed across the village by Laceby Village Council include those at the Cemetery and the bench outside Cloverdale Care Home.

If you think of an ideal place for a new bench, then let us know and we will see what we can do!

### Village Council Meeting Dates:

- Tuesday 4<sup>th</sup> June @ 7.30pm
- Tuesday 2<sup>nd</sup> July @ 7.30pm
- Tuesday 6<sup>th</sup> August @ 7.30pm
- Tuesday 3<sup>rd</sup> September @ 7.30pm

Public welcome, and agenda items available approximately a week before on our website.

**All meetings are held at the Stanford Centre, Cooper Lane, Laceby.**



## Your Community Groups

### Laceby History Group

We are a small friendly village group who have been carrying out research into the history of Laceby, and Aylesby and Irby, since our foundation in 1977. We meet every two months, usually the



3<sup>rd</sup> Wednesday, at the Stanford Centre, Cooper Lane, Laceby, 7 to 9pm. Everyone is very welcome at our meetings (£1 per meeting) and there is no need to be a member. The meetings are publicised on the Laceby Village Community Facebook Group. Laceby History Group has an extensive collection of village photographs and documents which we show frequently in slideshows. For further details, please contact Jenny Chambers – email: [chambo21@hotmail.com](mailto:chambo21@hotmail.com).

### Laceby Community Centre (Temperance Hall), High Street



Laceby Community Centre is a registered charity whose aims are the provision of a village hall. The charity has 8 trustees, all living in Laceby, who run the hall. The Centre consists of a large hall and an adjoining kitchen together with various other rooms and was built in 1872. Activities that take

place in the hall include Karate, Ballroom Dancing, Cubs, and Craft. A "Saturday Pop In" is held every week, 9 to 11am, selling bric-a-brac, toys, baby equipment, books, small furniture, soft furnishings, clothing etc. We would love to welcome you to browse the items for sale and for a friendly chat. Any enquiries, please contact Jenny Chambers – email: [chambo21@hotmail.com](mailto:chambo21@hotmail.com).





RELAX  
JEM ACCOUNTING HAS GOT YOU COVERED



[jemaccounting@yahoo.co.uk](mailto:jemaccounting@yahoo.co.uk)  
Bespoke office in Lacey

JEM Accounting  
Meticulous - Exceptional

(Prices subject to VAT)

Self assessment £99

VAT return £39

Payroll £9

Ltd company accounts & tax return £350 or £29/month



[jemaccounting@yahoo.co.uk](mailto:jemaccounting@yahoo.co.uk)  
Bespoke office in Lacey

JEM Accounting  
Meticulous - Exceptional



Did you know

your Home Insurance could be void if your gas appliances are not serviced by a professional gas safe registered engineer annually?

Local Specialist in service & maintenance of all makes and models of gas boilers & fires.

ALL ASPECTS OF GAS WORKS UNDERTAKEN

Servicing | Installation | Repairs | Improved Efficiency  
Warranty Purposes | Landlord & Homeowner Certificates  
Boiler Replacements | Heating System Upgrades | & more!

07926415819

[matt@m2oplumbing.co.uk](mailto:matt@m2oplumbing.co.uk)

[www.m2oheating.co.uk](http://www.m2oheating.co.uk)

find us on facebook @m2oplumbingandheating

Gas Safe Registered Engineer - 596504





## Your Village Council

### Laceby Allotments



Would you like space to grow your own fruit and veggies, or perhaps produce some fabulous flowers? Laceby Allotments provide a peaceful and restorative environment which enable you to get healthy exercise, and socialise with a community of growers which span all generations and backgrounds. If you would like to know more, then contact the Council with your enquiry.

Email: [clerk@laceby-village-council.net](mailto:clerk@laceby-village-council.net)

### The Robert Brooks Trust

The Robert Brook's Trust is a little known Laceby Trust which has a sum of money available to distribute.

The money may be awarded in grants to individual women, or groups of women, aged over 40 years, who are in need, hardship, and distress. The grants can be for items, services, or other facilities.

Recipients must either have attended the Stanford School, Laceby or be resident in the Parish of Laceby.

The Trustees would be happy to consider a wide range of applications such as 'lifeline' type phones, talking books, wheelchairs, mobility scooters, other aids for disabled people, hospital visiting expenses, funeral expenses, medical, dental, and optical costs, housing repairs, crime prevention measures etc.

For further information, please contact the Trustees, in confidence:

Councillor Turner - 10 Grimsby Road, Laceby or

Councillor Metcalf – 7 Cemetery Road, Laceby

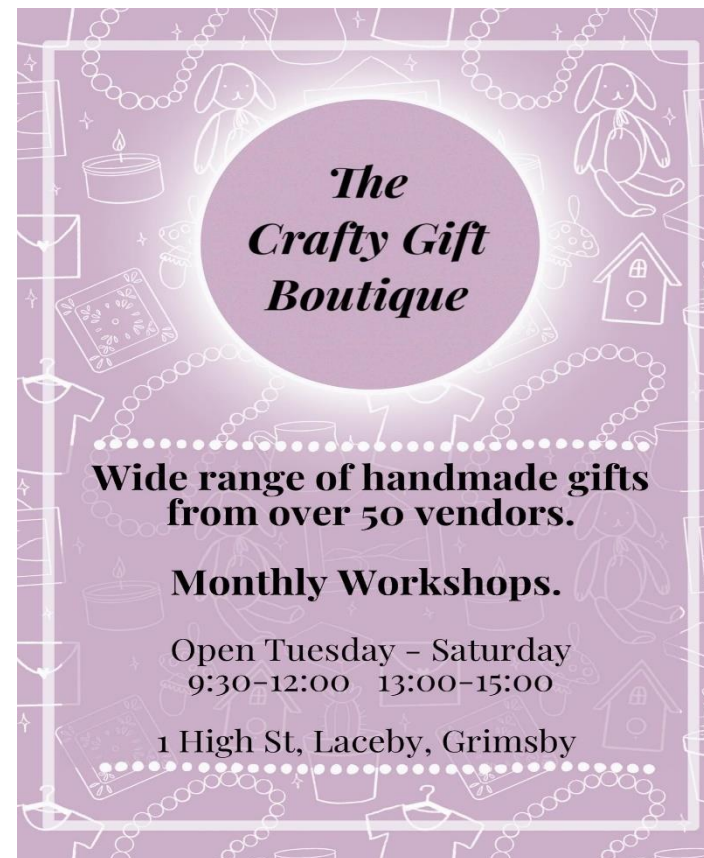
## Your Ward Councillors

If you need to raise an issue or have a problem with a service provided by NELC, then you could contact your Ward Councillors for the Wolds Ward:

- Councillor David Hasthorpe – [David.hasthorpe@nelincs.gov.uk](mailto:David.hasthorpe@nelincs.gov.uk)
- Councillor Henry Hudson – [henry.hudson@nelincs.gov.uk](mailto:henry.hudson@nelincs.gov.uk)

For more information go to [www.nelincs.gov.uk/your-council](http://www.nelincs.gov.uk/your-council), or contact Democratic Services at the Municipal Offices:

- Email: [democracy@nelincs.gov.uk](mailto:democracy@nelincs.gov.uk)
- Tel: 01472 324121



## Your Community Groups

### The Stanford Trust

And secondly the provision of bread and money for 'the poor' has evolved into an annual charitable grant for residents of Laceby which is administered by the Stanford School.

The Trustees are proud to celebrate and to continue to uphold the 304-year legacy of Philip and Sarah Stanford.

Artwork on the Stanford Centre Hall wall.



### The Stanford Charity Trust – Educational Grant

Each year the Stanford Trustees make grants to suitable applicants who under the age of 25 years and who are about to commence a Higher Education course level 4 or above or who enter into an apprenticeship and who reside in Laceby, Bradley, Irby, Barnoldby-le-Beck or Aylesby. (Grants are not normally made for A level studies or those undertaking a level 3 qualification).

The Educational Grants are not means tested and will only be given once (usually during the first year). Grants are given to help cover the initial cost of tools, books or specialist equipment.

Applications must be made by the **1<sup>st</sup> October** each year, and any Educational Grant will be made to all successful applications during the December of that year.

Applications and further information is available from Laceby Stanford School website here - <http://www.stanfordschool.org/aboutus/heritage.html>

Or by contacting the Clerk to the Trustees on email at [stanfordtrustclerk@gmail.com](mailto:stanfordtrustclerk@gmail.com)

## Your Community Groups

### St Margaret's Church

#### What's on at the Parish Church?

#### Annual Garden Party

**Saturday June 8<sup>th</sup>**

In the Church Grounds from 2 – 4pm

Teas, Games, Cake Stall, Raffle, Crafts, Bric a Brac, Plants

And lots more for all the family

Please Come and Support the Village Church

#### D Day

There will be a service to commemorate the 80<sup>th</sup> Anniversary of D Day

**Sunday June 9<sup>th</sup> at 11am**

Everyone Welcome

#### Coffee and Chat

**Every Thursday** there is a coffee morning in the church from 10.30-12noon

A great opportunity to meet new people over a cup of coffee

A Warm Welcome awaits you. Why not give it a try sometime?

#### Wild Church

On **Every 3<sup>rd</sup> Sunday at 3pm** is continuing to grow

Great for families and children

Don't Miss Out. Come and Enjoy the Fun

#### For Further Information

See the notices on the church gate, or contact

The Rector

Revd Chris Goldsmith 07494870701 /

[christine.goldsmith@lincoln.anglican.org](mailto:christine.goldsmith@lincoln.anglican.org)

The Churchwardens

Jennifer Mawer 01472 871206 /

[jen.mawer@tiscali.co.uk](mailto:jen.mawer@tiscali.co.uk)

Sharon Greenbeck 01472 590357 /

[shazmar@ntlworld.com](mailto:shazmar@ntlworld.com)



## Your Local Policing Team

The Neighbourhood Policing Team appreciates the importance of being in the right place, at the right time, for the right reasons, to reassure the public, improve public confidence and reduce crime and antisocial behavior in the area in which we all live and work.



We encourage all residents to call and report any issues where they live so that we can deal with them and step-up patrols in the area.

The number to call for non-emergency issues is 101, and the named officers for Laceby and the Wolds is:

PC 591 Danielle Drake – [Danielle.drakes@humberside.police.uk](mailto:Danielle.drakes@humberside.police.uk)

PCSO 7752 Joe Kusnyer – [joseph.kusnyer@humberside.police.uk](mailto:joseph.kusnyer@humberside.police.uk)

## The Stanford Trust

The school, however, was not the only focus of the Trust and its Trustees. Sarah had also listed in the Deed of 1720 several other charitable causes which she required the Trustees to implement. She said that the Trustees were to pay towards.... "putting out some of the said Scholars belonging to Laceby to be an Apprentice to some honest trade". This was a very enlightened decision of Sarah's in a rural area where poor families might have little expectation for their children other than working on the land.

Sarah did not forget her husband's decree that she should help the "poor widows" of Laceby and she included in her Trust a requirement that the Trustees should "distribute among the poor people of Laceby ... upon every first Sunday in every month throughout the whole year forever five shillings in Bread at the Church Door.

Sarah specified in the Trust Deed that every year, on the anniversary of Philip's death in May, a Sermon should be preached in the Church. She also required the Trustees to distribute the sum of five shillings to the Scholars. The division of five shillings between the pupils of the school at that time was assumed to equate to approximately 1d (one old penny) each and so the day became known as Penny Day (now Founders' Day). 1d (old penny) has since been increased to 50p.

## The Stanford Trust Today

The Trust still owns the land and buildings of the existing school site, together with other land in the area and the site and building known as The Stanford Centre. The Stanford Centre was built from funds received from a compulsory purchase order of Trust land by the Local Authority. It was officially opened in 1975. It is now run and operated by a group of Volunteers known as The Stanford Centre Group.

As the Charitable Foundation of Laceby Stanford School, the Trust appoints three Governors to the school and provides support throughout the year in the form of additional educational resources and equipment. All Year 6 school leavers from the appropriate villages receive either a Bible or a dictionary donated by the Trust.

There are two further areas of work, firstly in the provision of grants to young adults, who are entering higher education or apprenticeships who attended Stanford School.

**25 Years Experience**  
**All aspects of Plumbing, Heating & Gas**  
**Boiler Repairs & Service**  
**Bathroom Installations**  
**Landlord Gas Safety Checks**  
**Boiler Installations**  
**Professional & Friendly**  
**5 Star Reviews**  
**Laceby Based**

**Neil Graham**  
PHG LTD.

**07856944839**  
**office@neilgrahamphg.com**



## Your Community Groups

### The Stanford Trust 1720 - 2024

The Stanford Trust is a registered educational charity and is the Charitable Foundation of the Voluntary Controlled Laceby Stanford Junior and Infants School. It also carries out other charitable activities.

In 1712 Philip Stanford, a landowner locally, died, and left property, lands and all his wealth to his widow, Sarah. The Stanfords had previously lived in Barnoldby-le-Beck and then at Bradley, where they had two children who, sadly, had died in infancy. When his father died Philip inherited property and land in several parts of Lincolnshire and the family crest (which became the Stanford School badge). He and Sarah moved to Laceby to farm around ninety acres of land and to live in the property at the bottom of Cooper Lane known as College Farm House. This property still stands today. Sarah was the step-daughter of Richard Nelthorpe whose uncle, Sir John Nelthorpe, had founded a Grammar School in Brigg in 1669. Possibly this family tradition led to Sarah's decision to interpret her husband's Will in the way in which she did? She was required before her own death to set out how Philip's Will was to be implemented. This did not say she should build a school but simply said she should have full power and authority in her lifetime to "settle and convey his dwelling house and all his lands in Laceby for ever ... upon such or as many poor widows or other charitable uses as she, his said wife should nominate, appoint or think fit".

Sarah formed a charitable Trust signed by a Deed of Trust on 11 October 1720. Its principle aim was to ensure that a school was built in Laceby and it charged the first Trustees to raise the sum of £60 from rental income of land. It took the Trustees ten years to do this and in 1730 Laceby Stanford Charity School, was opened to the children of the "poor inhabitants of Laceby, Barnoldby and Bradley". Sadly, Sarah did not live to see the building of the schoolhouse and the opening of her school, she died in 1725. The original school/house was demolished in the early 1970s. As well as owning the land and buildings and employing the staff, the Trustees were responsible for the administration of the school, standards, provision of books and equipment and repairs and maintenance. This continued for over two hundred years up until the 1944 Education Act when the school changed to a Voluntary Controlled Trust School and became maintained by the Local Authority.



Looking for homecare?  
KCC provide support in and around  
North East Lincolnshire.

**KCC HOMECARE**  
Caring for vulnerable and elderly members of our community

E-Mail: [keelbycc@outlook.com](mailto:keelbycc@outlook.com) Tel: 01472 596913

For all enquiries or for more information  
please call our office on 01472 596913 or  
email [keelbycc@outlook.com](mailto:keelbycc@outlook.com)

Quote code 'NEWCARE' to receive your  
introductory offer

  Find us on 

## Your Community Groups

### The Laceby Community Collective

As work is progressing The Laceby Community Collective would like to say **a big thank you** to the following organisations:

- Mike Brooke's refrigeration for installing the new air-con unit at cost, having local companies put their time and effort in to help has meant other monies can be focused elsewhere.
- Luvic electrical is another local Laceby company who is doing all electrics at cost also, which we are very grateful for.
- The Laceby Solar Farm Funding.
- The RWE Humber Gateway Community Fund managed by the Lincolnshire Community Foundation.
- Ørsted for their grant through the East Coast Community Fund, managed by Grantscape.
- Laceby Village Council for funding to support the Laceby Summer Social Event.



Through this funding, the Laceby Community Collective have been able to undertake the ongoing renovation works to the Butt Lane Pavilion and without their support, this would not have been possible.

The windows, shutters, and doors as the next stage of the process that we are now working on.

We are continually looking for help, whether this be in the form of joining our **membership scheme** ->, volunteering or funding. Once the building is up and running, our aim is to cater for, and be exclusive to, everyone in Laceby, so please come to our meetings and let us have your input!



SCAN ME

## Your Community Groups

### The Laceby Community Collective - Events for 2024

- **Sunday 14<sup>th</sup> July** from 10.30am to 3pm – LCC Fun Dog Show
- **Saturday 20<sup>th</sup> July** from 1pm to 9pm – The Laceby Summer Social
- **Thursday 25<sup>th</sup> July** at 7pm – Members Meeting at Laceby British Legion
- **Friday 30<sup>th</sup> August** – Laceby FC signing on evening with fun and games for all
- **Thursday 26<sup>th</sup> September** at 7pm – Laceby Community Collective AGM at Laceby British Legion
- **Thursday 31<sup>st</sup> October** – Halloween – more details to follow!
- **Thursday 28<sup>th</sup> November** at 7pm - Members Meeting at Laceby British Legion
- **Saturday 7<sup>th</sup> December** – Christmas Market

**Why not follow us on Facebook or Instagram for the latest events!**

Visit our website at: [www.thelacebycommunitycollective.org.uk](http://www.thelacebycommunitycollective.org.uk)

or email us at: [info@thelacebycommunitycollective.org.uk](mailto:info@thelacebycommunitycollective.org.uk)



Laceby Solar Farm  
Community Fund



Humber Gateway

RWE

Ørsted